



SALFORD PRIORS PARISH COUNCIL NEWSLETTER

January/February 2021 Edition

E-NEWS

Want to keep up to date with local news and events?
Don't have time to read notice boards?

Simply email the [clerk@
salfordpriors.gov.uk](mailto:clerk@salfordpriors.gov.uk)

Your name will be added to the list. Your email address is not disclosed and you can ask to be removed at any time.

WEBSITE

Salfordpriors.gov.uk

Parish Improvement News

Despite the ongoing lockdown, the Parish Council have been holding their monthly meetings via video conferencing and the working groups have continued with their various planning meetings using the same media.

As you know, house building in the village has generated a significant amount of money for the Parish Council to invest in improving the Community Infrastructure for the benefit of all residents.

Due to the COVID-19 pandemic, processing payments of these funds by Stratford District Council (SDC) has been delayed.

Despite this, we have been working to move the improvements forward as quickly as possible and we have six exciting projects in various stages of development, some of which follow up on Policies outlined in the NDP.

These are now sufficiently developed to share with you now.....

Traffic Calming Measures

The planning process has been a protracted period of time and many discussions have been held to develop an approach to the speeding issues that we have in the Parish.

The working group have been reviewing alternative methods to control speed, whilst balancing the need for lighting on any build-outs, noise caused by speed humps, measures already planned as part of the CALA development and protecting the Conservation area.

We have been working with Warwickshire County Highways who have advised us on the most appropriate measures for Station Road, Evesham Road and School Road.

We are awaiting a final report which we will action as soon as possible.

Once implemented, we will monitor the situation and if

necessary, implement additional measures.

There are also a number of residents who have come forward to bolster our small Speed Awareness Team and in the New Year, after suitable training, they will be manning a speed gun on the major routes through the village.

Thanks go to those volunteers.

New Playground Facilities

The exciting news is that, having chosen the preferred contractor for



additional playground facilities January 2020, we have now received sufficient money from Stratford District Council to finally place the order with them.

We are on Facebook

Facebook.com/
Salford Priors
Parish Council

The Clerk is the first point of contact for all parish enquiries.

**01386 421028 or
07740581739 or
[clerk@
salfordpriors.gov.uk](mailto:clerk@salfordpriors.gov.uk)**

Parish Councillor Contact details :

Cllr. Alan Green
Chairman:
01789 773755

Cllr. Liam Maude,
Vice Chairman:
01789 765295

Cllr. Rosemary Green
01789 773755

Cllr. Clive Hickman
01789 772025

Cllr. Kim James:
01789 772338

Cllr. Tom Neale:
07794039997

Cllr. David Penn:
01789 778670

Cllr. Tony Shale
07941 979188



The project covers a new skate park and pump track at the end of the zip wire, an outdoor gym where the current skate ramps are (we don't think that the blue skies are part of the deal!), a trim trail with gym equipment that links between the path by the Scout Hut and the basketball hoop to create a complete route around the edge of the playing field and, finally, a new multi-purpose goal unit.



The contractor is placing equipment orders and they should be able to start in the first week of April and be complete about 5 weeks later, ready for the good (??!)

weather. We also hope to put more seats around the field.

Leisure Trails Development

Just as exciting is a leisure trails project that the Parish Council initiated a few years ago (formerly Cycleways).

We now lead the development of the leisure trails in conjunction with the Avon & Arrow Greenway Project (AAGP).

The aim of the project is to deliver safe leisure routes within the Parish linking to the existing Public Rights of Way in the Parish.

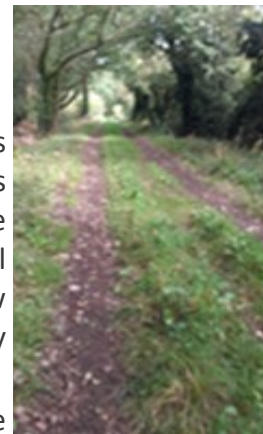
The leisure routes will be multi-use for Horses, Cyclists and Walkers and also with access for wheelchairs.

The first deliverable stretch has been identified as Salford Priors to Wixford utilising the old railway track where possible.

Local landowners have been very positive towards the project and they are being approached for formal approval of access where needed.

The AAGP has obtained quotes for an Ecology Survey for this route, the working group has reviewed these and made a recommendation to the Parish Council which was approved; the order for this work has now been placed. The survey will take place once the land owners have granted access permission.

In parallel, the AAGP continues to work independently on routes to the north and south of the Parish. The ultimate aim is to connect these to



We are on Facebook

Facebook.com/
Salford Priors
Parish Council

The Clerk is the first point of contact for all parish enquiries.

**01386 421028 or
07740581739 or
[clerk@
salfordpriors.gov.uk](mailto:clerk@salfordpriors.gov.uk)**

Parish Councillor Contact details :

Cllr. Alan Green
Chairman:
01789 773755

Cllr. Liam Maude,
Vice Chairman:
01789 765295

Cllr. Rosemary Green
01789 773755

Cllr. Clive Hickman
01789 772025

Cllr. Kim James:
01789 772338

Cllr. Tom Neale:
07794039997

Cllr. David Penn:
01789 778670

Cllr. Tony Shale
07941 979188

Salford Priors Leisure Trails providing longer routes between Evesham and Alcester for both leisure and commuting purposes.

New Village Green

As you should all be aware, the



large area of grass in front of the CALA homes will, in due course, become the property of the Parish and will be for the use of all Parish residents.

This will be a leisure area as we already have the comprehensively equipped playing field for sports activities.

As such, we have engaged the services of a landscape designer to provide some ideas for the area, including investigation of a nature area around the balancing pond close to the Angus entrance.

As part of the deal, the Parish will also own a communal car park near the new substation and the shop. The potential to install pay as you go electric vehicle charging points here is now being investigated.

Public Rights of Way Improvements

The Parish Council and volunteer residents have carried out a complete condition survey of all the Public Rights of Way in the Parish. In doing so, we have gained access to Warwickshire County Council funding to both replace and install new way-marker posts and signage. 44 of these have already been installed (some of you may have seen the PC Chairman getting stuck in). Route number markers will make travelling along them easier.

We are pleased to report that the works have been carried out with the full co-operation of the landowners.

Just a quick reminder that as the landowners have been supportive of us in this project, we should repay this by staying on the footpaths, keeping dogs under control and off any planted fields and taking any rubbish home with us.

Improving TOPs

Finally, another working group is looking at the future of the TOPs building, as a new lease for the ground on which it stands should be signed soon.

Options for the building range from a light refresh to major changes, possibly extending it to enable activities that can't be scheduled in the Memorial Hall to be booked here.

There are a number of items on the wish list of changes including re-decoration, new blinds, improved refreshments area and new floor covering.

We are on Facebook

Facebook.com/
Salford Priors
Parish Council

The Clerk is the first point of contact for all parish enquiries.

**01386 421028 or
07740581739 or
[clerk@
salfordpriors.gov.uk](mailto:clerk@salfordpriors.gov.uk)**

Parish Councillor Contact details :

Cllr. Alan Green
Chairman:
01789 773755

Cllr. Liam Maude,
Vice Chairman:
01789 765295

Cllr. Rosemary Green
01789 773755

Cllr. Clive Hickman
01789 772025

Cllr. Kim James:
01789 772338

Cllr. Tom Neale:
07794039997

Cllr. David Penn:
01789 778670

Cllr. Tony Shale
07941 979188

A structural survey of the building by a specialist contractor has been completed to inform us as to what work, if any, is needed to ensure that the building is sound and also to provide us with information on what improvements could be undertaken e.g. better insulation, re-decoration, new flooring, external timber treatment and so on.

Former Parish Councillor John Stedman

The Parish Council has unanimously resolved to bestow its highest civic honour it can award the Honorary Freedom of the Parish to former parish councillor John Stedman.

John was first elected to the Parish Council in May 1984 and during his long unbroken term of office of 35 years served as Vice Chairman and Chairman of the Council, John stepped down from the Parish Council in October 2019 but continues to be a stalwart supporter of local organisations and good causes.

John took a keen interest in many areas of the council's work from finance to the restoration of the Marsh Farm Quarry, he was known for giving his professional advice on planning applications involving Trees.

John also served as Chairman of the Memorial Hall and was instrumental in obtaining grants and funding for the construction of the Memorial Hall Lounge extension.

Away from his Parish Councillor duties John became Parish Clerk to Pebworth Parish Council and Honeybourne Parish Council, John

retired from Honeybourne last year but he is still very active as Pebworth Clerk.

John represented the council for 35 years and his wit and wisdom are greatly missed.

The Parish Council hope that this small token of our gratitude goes some way to recognising all of the time and effort he expended in the service of his fellow parishioners and, whilst the title is only an honorary one, it is only bestowed in exceptional circumstances to formally acknowledge service given above and beyond that normally expected of a public official.

The Council plan to hold a small civic ceremony to present John with the Freedom Scroll once Covid restrictions allow.

Christmas Switch-On Group Call to Arms

The Parish Council are looking for volunteers for the Christmas Switch-On group.

This village event has been hugely successful in the past and we would like to get it up and running again this year.

Contact the Clerk for further details.



Getting Involved

Hopefully you can see from these current projects that there will be significant investment and improvements in the Parish over the coming few years.

If you would like to find out more about any of the working groups, information can be found on the Parish Council website or please contact the Clerk.