

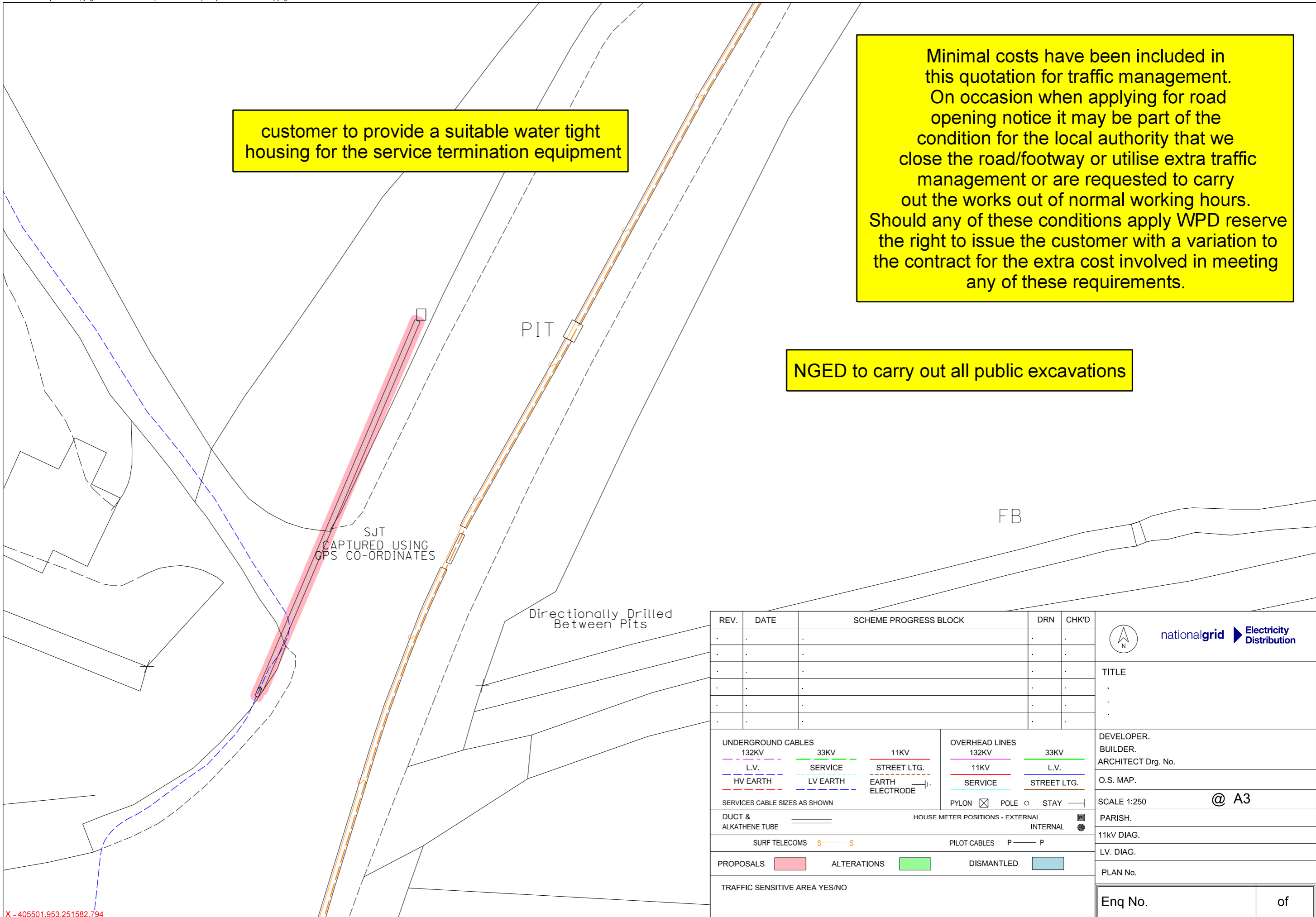
customer to provide a suitable water tight housing for the service termination equipment

Minimal costs have been included in this quotation for traffic management. On occasion when applying for road opening notice it may be part of the condition for the local authority that we close the road/footway or utilise extra traffic management or are requested to carry out the works out of normal working hours. Should any of these conditions apply WPD reserve the right to issue the customer with a variation to the contract for the extra cost involved in meeting any of these requirements.

NGED to carry out all public excavations

Information is given as a guide only and it's accuracy cannot be guaranteed.

PLEASE NOTE: This plan ONLY shows assets owned by National Grid Electricity Distribution (NGED). Electricity assets owned by National Grid Electricity Transmission (NGET) and IDNO's (Independent Network Operators) MAY be present in this area.



REV.	DATE	SCHEME PROGRESS BLOCK	DRN	CHK'D



TITLE  
.  
.  
.

<b>UNDERGROUND CABLES</b> 132KV      33KV      11KV L.V.      SERVICE      STREET LTG. HV EARTH      LV EARTH      EARTH ELECTRODE	<b>OVERHEAD LINES</b> 132KV      33KV 11KV      L.V. SERVICE      STREET LTG.
SERVICES CABLE SIZES AS SHOWN	PYLON ☒ POLE ○ STAY —
DUCT & ALKATHENE TUBE	HOUSE METER POSITIONS - EXTERNAL INTERNAL
SURF TELECOMS S—S	PILOT CABLES P—P
PROPOSALS [Red Box]	ALTERATIONS [Green Box]      DISMANTLED [Blue Box]
TRAFFIC SENSITIVE AREA YES/NO	

DEVELOPER.  
BUILDER.  
ARCHITECT Drg. No.  
O.S. MAP.  
SCALE 1:250 @ A3  
PARISH.  
11KV DIAG.  
LV. DIAG.  
PLAN No.

Eng No.      of